

body>data>space  
RESPONSIVE ENVIRONMENTS

# respond

FUTURE PHYSICAL & THE JUNCTION  
2-5 APRIL 2003, CAMBRIDGE



RESPOND is a co-production between Future Physical (shinkansen/East England Arts) and The Junction in association with CUMIS

*events*

**Cluster featuring Socket**  
THURSDAY 3 APRIL, THE JUNCTION

**Texterritory**  
FRIDAY 4 APRIL, MUMFORD THEATRE

**Respond to Film**  
FRIDAY 4 APRIL, ARTS PICTURE HOUSE

**Memory Release**  
SATURDAY 5 APRIL, HOMERTON COLLEGE

*installations*

**Dot.Dot**  
WEDNESDAY 2 – SATURDAY 5 APRIL, CB2 CAFÉ

**IntelligentCITY**  
WEDNESDAY 2 – FRIDAY 4 APRIL, GRAFTON CENTRE

**Life Spacies II**  
WEDNESDAY 2 – SATURDAY 5 APRIL, SEDGWICK MUSEUM

**RememberMe**  
WEDNESDAY 2 – SATURDAY 5 APRIL, GRAFTON CENTRE

**Time Machine!**  
WEDNESDAY 2 – SATURDAY 5 APRIL, CORPUS CHRISTI PLAYROOM

**whisper**  
WEDNESDAY 2 – SATURDAY 5 APRIL, CAMBRIDGE DRAMA CENTRE

*interchange*

An interchange for specialists and those with an active interest in the themes of: **BODY, DATA** and **SPACE**  
WEDNESDAY 2 – FRIDAY 4 APRIL  
BABBAGE LECTURE THEATRE

april 2003

30th Sunday	31st Monday	1st Tuesday	2nd Wednesday	3rd Thursday	4th Friday	5th Saturday	6th Sunday	7th Monday	8th Tuesday
			■	■	■	■			

Cambridge

a map of the venues and contact details is at the back

# RESPOND

*Future Physical / The Junction / CUMIS*

RESPOND is a cutting-edge programme of cultural events and discussions exploring the blurry edge between physical and virtual space. RESPOND presents a programme of public events in venues throughout Cambridge. You will encounter astonishing artworks where you least expect them and many need YOU to activate them!

An adventure for people of all ages, these events highlight a diverse range of responsive environments being developed today for tomorrow's world. This is an unprecedented opportunity to find out how data, spaces and human bodies co-exist and interact, giving a glimpse of future environments for play, living, relaxation, social connection, learning and work.

At the heart of RESPOND is the **InterChange**, three days of debate for those with an active interest or specialisation in performance, design, architecture, video, film, visual arts, computer science, digital media and gaming.

*RESPOND is a co-production between Future Physical (shinkansen/East England Arts) and The Junction in association with CUMIS.*

*RESPOND features as the last in a series of four Network Exchanges produced as part of the Future Physical programme September 2002 to April 2003. RESPOND culminates the four research strands of Future Physical and draws on shinkansen's research into touch, intimacy and presence, The Junction's Smart Space research programme and the work of CUMIS in the evolution of intelligent moving image architecture.*



## Cluster club night

THURSDAY 3 APRIL 2003  
THE JUNCTION  
ENTRY: £5  
TIME: 20:00 – 01:00  
LIVE WEBCAST: WWW.FUTUREPHYSICAL.ORG

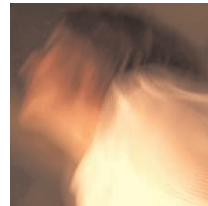
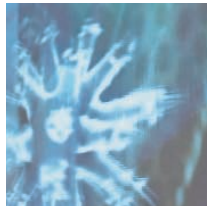


*Cluster is a shinkansen production in collaboration with Future Physical (shinkansen/East England Arts), London Arts and Groovy Gecko, produced with The Junction for RESPOND. Socket performance with support from Sonic Arts Network.*

Featuring **Socket: I Am The Mighty Jungulator** (performance at 21:30), **Charm Offensive** DJ YAKA & visuals by Sarah Gibson and **CellBytes**, live telematic bytes of dance/performance

The CellBytes crew, Raya ,2BitTV and Kingsuk Biswas (Bedouin Ascent) collaborate again for a specially created performance/web club mix of eclectic sound and visuals integrating live digital performance. An immersive and enchanting merge of bodies, data and space.

Bristol-based Socket present a live multi-media performance using their self-authored software instrument – The Mighty Jungulator. Scraps of images and sounds are fed, processed and projected through the Jungulator and mixed fluidly with improvised clarinet, electric bass and synthesiser. The resulting ever evolving show is a compelling, post-everything experience.



## Textterritory performance – work in progress

*Sheron Wray (UK) and Fleeta Siegel (US)*

FRIDAY 4 APRIL 2003  
MUMFORD THEATRE  
ENTRY: £5  
TIME: 20:00 (WITH POST SHOW DISCUSSION)

Bring your mobiles with you for the one performance where you will not be asked to switch them off !!

Grace, a Legal Secretary arrives home early to prepare herself for her first real date with Jerome. She's just bought a new pair of shoes to go with one of those outfits. At the moment she drops her keys on the kitchen table, the text arrives from J — he has been delayed but will be there soon. From optimism to despair from knowing to kneeling in prayer, Grace's dilemmas and insecurities unfold as she figures out what to do with this unexpected time on her hands. Together with the influence of the audience she decides exactly what to wear, who she might call if he doesn't show up as well as trying to reassemble a photofit image of what Jerome really looks like. After all they had only met in a dimly lit club going on for two weeks ago. Since then all they have been doing is texting out their territory.

The multi-media, non-linear narrative breaks the line between the audience and the performing artists; it is told through texting/photo-messaging, dance, music, spoken word and animation.

*Textterritory is a Future Physical commission supported by Textploitiation, produced by Plan B and Feedback 33 with support from NESTA, Arts Council Dance Department, Digit and PD3.*

## Respond to Film

FRIDAY 4 APRIL 2003  
ARTS PICTURE HOUSE  
ENTRY: £5.80/ £3.80 (MEMBERS/CONCESSIONS)  
TIME: 22:30



*The Remote Controller is a Future Physical Research Commission with support from the Prelinger Archives (New York/San Francisco) and the Internet Archive.*

### 'A Message to the Seventh Generation'

*A film by Max Pugh and Marc Silver.*

This film celebrates indigenous world views in the global fight against Biopiracy – the new colonialism. From the Cook Islands to New Zealand, from Vanuatu to the Earth Summit in Johannesburg, we have been asking indigenous people for their views on Western science—its vision of a genetically engineered future and its deep links with corporate profits, globalisation and colonisation.

Combining passionate critiques of our potential futures and living alternatives to the globalised monoculture with music and stunning visuals, this film will take its audiences on a journey into truths they thought disappeared long ago—inspiring and educating them to ask serious questions of the collective illusion we call progress.

### Dreamin' of Travellin'

*A short film by Stan Mytkowski (Chenko)*

An abstract audio-visual journey. Close your eyes, relax and move.



### The Remote Controller

*A DV sound/video piece by People Like Us (UK)*

Media artist Vicki Bennett (People Like Us) is renowned for her ironic and humorous take on life. For this work she samples multiple image and sound footage from "Orphan films" (educational films sourced from 80,000 held in the Prelinger Archives). Historically she explores the subject of experimentation in human body and machine interfaces—its successes and pitfalls—in the 20th century. The piece is in development to become an interactive installation work later in 2003.



## Memory Release

performance – work in progress

*Isabel Rocamora (UK)*

SATURDAY 5 APRIL 2003  
HOMERTON COLLEGE AUDITORIUM  
ENTRY: FREE (LIMITED PLACES, PLEASE BOOK)  
TIMES: 18:30 & 20:00  
(WITH POST SHOW DISCUSSION)

Anti-gravity artist Isabel Rocamora creates a live solo promenade performance piece. Memory Release explores the physical process of accessing and experiencing visual memories. The piece draws from the mechanisms of encoding and recalling and their relationship to brain and body in Neuroscience and Eastern Medicine.

Rocamora creates an intimate environment where the promenade audience directly experiences the journey of live data through an external nervous system. The data is originated by the hanging body and runs through motion capture and processing software resulting in video representations of visual memory traces. As the body remembers, so it edits its own memories live, intrinsically connecting the physical with the immaterial.

Rocamora collaborates with programmer Chris Fayers and research artist Camila Valenzuela to create a meditation on the human inner landscape.

[www.infinito.org.uk](http://www.infinito.org.uk)

*Memory Release is a Future Physical Research Commission produced by Infinito, co-produced by essexdance as associate artist, supported by Dance East and Colchester Arts Centre and Arts Council Dance Department.*



FREE

## IntelligentCITY interactive environment

*Sophia Lycouris/Yacov Sharir  
Stan Wijnans/David Stevens (UK/US)*

i

WEDNESDAY 2 – FRIDAY 4 APRIL 2003  
GRAFTON CENTRE  
ENTRY: FREE (NO BOOKING REQUIRED)  
TIMES: WEDS 09:00–19.30  
THURS TO FRI 09:00–17.30

A treasure hunt of surprises in the familiar surroundings of the shopping-centre, IntelligentCITY is a site-specific artwork created for the Grafton Centre that will place you at the centre of the interaction. Monitors, projectors and sensors create images and sound around you as you move throughout the shopping-centre, altering

your perception of the architecture of this familiar, everyday space. IntelligentCITY aims to enhance your capacity to 'see' and 'hear' in new ways. A co-authored project by international dance and technology specialists with expertise in interactive sound, choreography, wearable computing and multimedia.

[www.kunstwerk-blend.co.uk](http://www.kunstwerk-blend.co.uk)

*IntelligentCITY is a Future Physical/Junction Co-commission in collaboration with The Nottingham Trent University and University of Texas Department of Theatre and Dance and supported by London Arts, The Place, Paul Gillerion Pgcacoustics and Arts Council Dance Department.*

FREE

## Dot.Dot online virtual environment

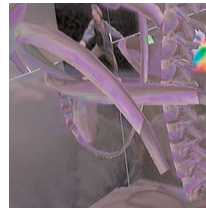
*Igloo (UK)*

WEDNESDAY 2 – SATURDAY 5 APRIL 2003  
CB2 CAFÉ  
ENTRY: FREE (NO BOOKING REQUIRED)  
TIMES: CB2 OPEN BETWEEN 12:00–23:00

Dot.Dot. A landscape from beyond the edges of the browser window that gives glimpses of unseen places. A dance work constructed using motion capture from several performances creates ghostly avatars that move and react to players inputs within an online virtual environment. Dot.Dot can be seen connected live and projected in the basement at CB2.

[www.igloo.org.uk](http://www.igloo.org.uk)

*Dot.Dot is a Future Physical Commission and Igloo production supported by Televirtual with assistance from essexdance and Arts Council Dance Department.*



FREE

## Life Spacies II interactive installation

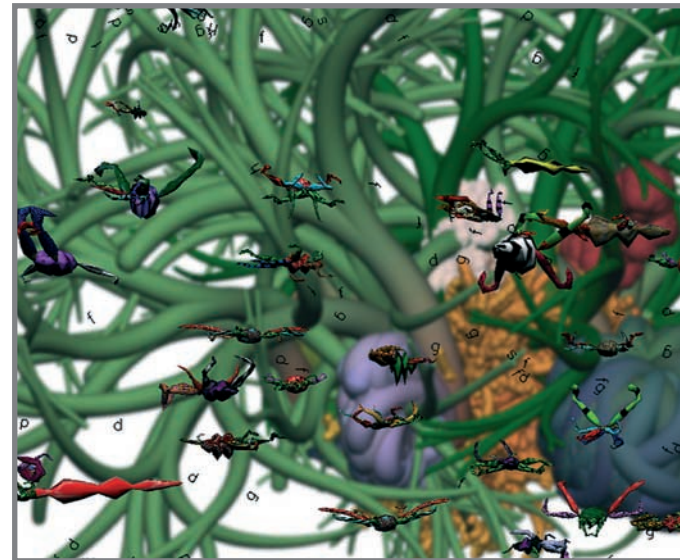
*Christa Sommerer & Laurent Mignonneau (JAPAN)*

WEDNESDAY 2 – SATURDAY 5 APRIL 2003  
SEDGWICK MUSEUM OF EARTH SCIENCES  
ENTRY: FREE (NO BOOKING REQUIRED)  
TIMES: WEDS-FRI 9:00–13:00 / 14:00–17:00  
SAT: 10:00–13:00

Life Spacies II is an interactive artificial life environment where users can create artificial creatures by typing text messages. The text characters function as genetic code for the creature's design. Each different text will create a different creature. See your creature and others live, eat, procreate and die in their artificial world.

[www.iamas.ac.jp/~christa](http://www.iamas.ac.jp/~christa)

*Life Spacies II developed at ATR Media Integration and Communications Research Lab, Kyoto.*



i FREE

## RememberMe interactive installation

*Joseph Hyde (UK)*

WEDNESDAY 2 – SATURDAY 5 APRIL 2003  
GREAT COURT, GRAFTON CENTRE  
ENTRY: FREE (NO BOOKING REQUIRED)  
TIMES: WEDS 09:00–19:30 THURS-FRI 09:00–17:30 SAT 09:00–18:00

RememberMe is a hotwired Photo Booth with a mind of its own and a memory for faces, developed by one of the UK's leading sound and digital artists. Visitors, soon become aware that this machine has wayward tendencies and is haunted by the imprint of previous visitors. On leaving the booth, visitors will be presented with the expected strip of four photographic images, but of unpredictable content: digitally warped, distorted and abstracted.

*RememberMe is a Future Physical Commission assisted by Bath Spa University College.*

FREE

## Time Machine! interactive installation

Masayuki Akamatsu (JAPAN)

WEDNESDAY 2 – SATURDAY 5 APRIL 2003

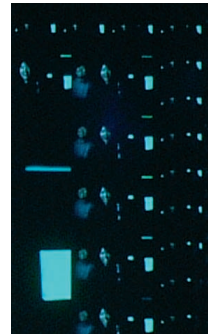
CORPUS CHRISTI PLAYROOM

ENTRY: FREE (NO BOOKING REQUIRED)

TIMES: 11:00 – 19:00

Time Machine! is a media device which will enable you to travel through time by manipulating a high-quality video image. The installation watches you constantly and you can see yourself travel back to the past and arrive back in the present. Time Machine also shows various aspects of time, displaying a series of many frames at once. You can alter the way you see time using a simple dial and enjoy the mysterious wonder of operating time freely.

*Time Machine!* is created by Masayuki Akamatsu, sound and video artist based at IAMAS in Japan. © 2002-2003, Masayuki Akamatsu.



FREE

## whisper participatory installation

Thecla Schiphorst/Suzan Kozel

Kristina Andersen/Julie Tolmie

Norm Jaffe/Sang Mah

Andruid Kerne/Jan Ekke

Rob Lovell/Laetitia Sonami (CANADA)

WEDNESDAY 2 – SATURDAY 5 APRIL 2003

CAMBRIDGE DRAMA CENTRE

ENTRY: FREE EVENT (NO BOOKING REQUIRED)

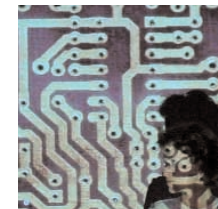
TIMES: 12:00 – 14:30 & 17:00 – 19:30

whisper is a participatory installation based on small wearable devices and intelligent garments that are linked to a network. These affectionate computing devices gather physical data and signals generated by the body, and respond to it. whisper rewrites the body as a networked ecosystem of data flows and information, visualising the invisible.

Up to six participants may enter whisper and put on the devices and intelligent garments. They can then experience, share, and interpret each other's bio-data such as breathing, heartbeat and brainwaves. The participants' proximity, movement and intention are made visible and audible by the network in an intimate and ironic way.

whisper is an acronym [wearable, handheld, intimate, sensory, personal, expectant, responsive system]

*whisper* has been produced with the support of V2, DEAF 03, Daniel Langois Foundation, B.C Arts Council, Canarie, Canada Council for the Arts, Future Physical (shinkansen/East England Arts) and The Junction.







## bookings & information

### JUNCTION BOX OFFICE

For booking RESPOND public events and installations

Tel: 01223 511 511 (Access, Visa, Switch)  
Website: [www.junction.co.uk](http://www.junction.co.uk)  
E-mail: [bookings@junction.co.uk](mailto:bookings@junction.co.uk) (enquiries only please)

### RESPOND acknowledges the support of the host

venues: ARTS PICTURE HOUSE, CAMBRIDGE DRAMA CENTRE, CB2 CAFÉ, CORPUS CHRISTI PLAYROOM, GRAFTON CENTRE, HOMERTON COLLEGE, MUMFORD THEATRE, SEDGWICK MUSEUM.

### FUTURE PHYSICAL


For booking RESPOND InterChange, Creative User Research Day and/or Research/Practice//Research/Practice

Tel: 020 7357 0824  
Website: [www.futurephysical.org](http://www.futurephysical.org)  
E-mail: [interested@futurephysical.org](mailto:interested@futurephysical.org) (enquiries only please)

### PROGRAMME UPDATES & INFORMATION STATIONS

<http://www.futurephysical.org>

Check the Future Physical website for final confirmation of dates, times and venues. The programme is subject to change without notice. Register online with Future Physical and you will receive programme updates directly to your mailbox.

 **RESPOND Information Stations** will be based at the Grafton Centre and The Junction from 2–6 April 2003.



Colchester Arts Centre



firstsite

f o a m



NORWICH ARTS CENTRE  
REPERTOIRE DE RECHERCHES THEATRALES, MUSICALES, DANSE ET CINÉMA

plan b



Québec



Signals Media Arts



WATERSHED



## RESPOND InterChange

WEDNESDAY 2 – FRIDAY 4 APRIL 2003

At the heart of RESPOND is the InterChange for specialists and those with an active interest in the integrated themes of:

**BODY** – *Presence, Intimacy and Touch*

**DATA** – *3D Navigable Knowledge and Visualisation*

**SPACE** – *Responsive Architecture and Materials, Virtual Design Tools*

A unique opportunity to explore and learn about advancements in the exciting interlock between virtual and physical space. The RESPOND InterChange brings together a group of international and national artists and thinkers, all experimenting on the dissolving border between virtual and physical worlds. RESPOND places the living emotional body at the centre of a weave of inputs on the themes.

Artists giving work-in-progress showings and lecture demonstrations:

**Simon Byford** (UK): Love Story | **FoAm** (Belgium): txOom

**Martin Kusch/Marie Claude Poulin** (Germany/Canada): kondition pluriel

**Mark Palmer** (UK): Maelstrom | **Jane Prophet** (UK): Cell

**Tom Sapsford** (UK): Hypnos | **Stanza** (UK): genomixer

**Phillip Warnell** (UK): Shock | **Catherine Watling** (UK): Temporal Manifestation

**Rachel Wingfield** (UK): Digital Dawn

The RESPOND InterChange is the final of 4 InterChange events in the Future Physical programme. Visit [www.futurephysical.org](http://www.futurephysical.org) for research outputs.

You can attend the RESPOND InterChange in a number of ways:

- If you can only spare a day, join us for the **Opening Keynote Programme** (Wednesday 2 April)
- For deeper development and involvement, sign up to three days (Wednesday 2 – Friday 4 April) of **InterChange** including theme related working groups, process demos, papers and panel discussions. Participants CAN CHOOSE TO FOLLOW ONE theme, OR WORK ACROSS ALL THREE.
- Stay for Saturday 5 April too – a specialist associated day of detailed discussion and debate: *The Creative User Research Day* OR *Research/Practice // Practice/Research*

### WEDNESDAY 2 APRIL 2003

KEYNOTE LECTURES – OPEN TO THE PUBLIC

BABBAGE LECTURE THEATRE

TIMES: 14:30–18:30

PUBLIC ENTRY: FULL £15 / CONC. £10

INTERCHANGE PARTICIPANTS: SEE RATES

To open the RESPOND InterChange we present an afternoon of visionary TALKS. Taking the themes for RESPOND, the speakers will input from their specialist knowledge.

**Paul Sermon** *Interactive Media Artist, University of Salford, UK.*

**Marcos Novak** *Trans-Architect, UCLA Los Angeles, USA.*

**Christa Sommerer** *Media Artist, IAMAS, Gifu, Japan.*

Followed by responses from a specialist panel with questions and answers. Overview and moderation by Ghislaine Boddington (*Future Physical/shinkansen*).

### THURSDAY 3 – FRIDAY 4 APRIL 2003

WORKING GROUPS

BABBAGE LECTURE THEATRE

ART SCHOOL-ROOM A / SMALL EXAM HALL

Engage in professional level group research, process sharing and networking revolving around the three themes. The working groups use shinkansen group process methodologies to engage participants in a professional exchange of ideas which enhance deeper understanding of themes and their context, professional development and network connections.

Led by: **BODY** – Ghislaine Boddington (*Future Physical/shinkansen*); **DATA** – Pete Ride (*DA2/University of Westminster*) and **SPACE** – Francois Penz (*CUMIS*) plus inputs from the speakers, commissioned artists and panelists of the InterChange.

## **SATURDAY 5 APRIL**

Two associated events exploring relevant methodologies on:

### **CREATIVE USER RESEARCH DAY**

1-DAY SYMPOSIUM SATURDAY 5 APRIL 2003  
MICHAELHOUSE CENTRE, TRINITY STREET  
TIMES: 10:00–17:30

Case study presentations and debate around the role of the user/audience as a creative participant in responsive environments and interactive spaces. Identifying the processes of user engagement in the work and exploring how creative participation is enabled. Practical examples of research methodologies and evaluation of results.

Future Physical (shinkansen/East England Arts) in association with Fo.Am (Belgium), Culture 2000 Framework of the European Commission and Playgarden (Arts Council of England).

### **RESEARCH/PRACTICE // PRACTICE/RESEARCH**

1-DAY SYMPOSIUM SATURDAY 5 APRIL 2003  
CAMBRIDGE UNIVERSITY DEPT. OF ARCHITECTURE  
1 SCROOPE TERRACE, TRUMPINGTON STREET  
TIMES: 09:00–19:00

Practice-based-research and practice-as-research occupy a borderland between Academy, Commercial R & D and the Cultural Industries. How can tensions be resolved? Can work of true research value and real artistic merit emerge from this environment? How can projects best be defined, funded and evaluated? This Symposium brings together leading researchers, practitioners and policy-makers to debate these crucial issues and put forward their recommendations.

CUMIS (Cambridge University Moving Image Studio) in association with CRASSH, Rescen Middlesex University and Future Physical.

## **RATES:**

### **RESPOND InterChange: Three Days 2–4 April 2003**

FULL £120 (GBP) *employed, organisations, institutions*  
CONC £80 (GBP) *students, independent artists, unemployed*

### **Day Rate:**

WEDNESDAY 2 APRIL 2003 (HALF DAY): FULL £25 (GBP), CONC £18 (GBP)  
THURSDAY 3 AND FRIDAY 4 APRIL 2003: FULL £50 (GBP), CONC £35 (GBP)  
This includes admission to all events including performances, installations, receptions, keynote speeches, speakers, panels, lecture demo's and working groups. Delegates are responsible for all other costs associated with their stay including accommodation, travel to Cambridge, and most meals.

### **Creative User Research Day**

SATURDAY 5 APRIL 2003: FULL £50 (GBP), CONC £35 (GBP)

### **Practice/Research//Research/Practice**

SATURDAY 5 APRIL 2003: FULL £50 (GBP), CONC £35 (GBP)

### **SPECIAL OFFER**

If you choose to attend the *RESPOND InterChange* (2–4 APRIL) PLUS either *Creative User Research* or *Research/Practice // Practice/Research* (5 APRIL) the rate will be only FULL £150 (GBP) OR CONC £100 (GBP), a saving of £15-30.

### **InterChange registrations open now**

Sign up at: <http://www.futurephysical.org>

PARTICIPANTS ARE ADVISED TO SIGN UP IN ADVANCE: places are limited so please register early. Deadline for registration is **MONDAY 24 MARCH 2003**. Registrations after this date will have to be made in person on the day of the event. Please make cheques payable to: Future Physical Ltd.



- 1 **The Junction**  
Clifton Road, Cambridge CB1 7GX  
t: 01223 511511 w: www.junction.co.uk  
A popular venue with a diverse programme of live music, theatre, dance, clubs, comedy and digital arts.
- 2 **Mumford Theatre**  
APU, Broad Street, Cambridge CB1 1PT  
t: 01223 352932  
This space hosts productions by students of APU, professional companies and amateur groups.
- 3 **Arts Picture House**  
38-39 St Andrew's Street, Cambridge CB2 3AR  
t: 01223 504444  
An independent cinema with regular VJ events in the bar. The perfect place to face the digital future.
- 4 **Homerton College Auditorium**  
Hills Road, Cambridge CB2 2PH  
t: 01223 507122
- 5 **Grafton Centre**  
East Road, Cambridge CB1 1PS  
t: 01223 316201  
A shopping centre wired with responsive artwork to make shopping during RESPOND a novel experience.
- 6 **CB2 Café**  
5-7 Norfolk Street, Cambridge CB1 2LD  
t: 01223-508503  
An informal internet café with projections in the basement.
- 7 **Sedgwick Museum of Earth Sciences**  
Downing Street, Cambridge CB2 3EQ  
t: 01223 333456  
Cambridge University's oldest museum.
- 8 **Corpus Christi Playroom**  
St Edwards Passage, Cambridge  
t: 01223 503333  
This studio presents a programme of student drama plus youth drama, new writing and non-mainstream performance as part of Cambridge Arts Theatre.
- 9 **Cambridge Drama Centre**  
Covent Garden (Off Mill Rd), Cambridge CB1 2HR  
t: 01223 511511  
Part of Junction CDC, presenting a programme of innovative drama and new writing for adults, and the best of children's & family theatre.
- 10 **Babbage Lecture Theatre**  
New Museum Site, Pembroke Street, Cambridge CB3 3RS  
In the heart of Cambridge University and site for RESPOND InterChange events.